

# AUGUST NEWSLETTER



## PROGENESIS

We help you start a healthy family



**Save the date for Genes next year:  
May 30 - June 1, 2024**

<https://www.progenesis.com/genes-conference/>

We will soon share videos of the speakers and professional images capturing the remarkable event!



Progenesis is committed to continued education and takes an active role representing the science in the field. Here is where we have recently been and a few places we hope

to see you next:

1. ESHRE (June)
2. EVMS Workshops (July)

# AUGUST NEWSLETTER



**PROGENESIS**

We help you start a healthy family

## What's New?

### Gardner Grading Guide

To accurately compare the predictive performance of the Gardner method (using a 388 threshold) and Progenesis (using a 5/10 threshold), a study was conducted using 20 images with embryos. The aim was to determine the number of embryos correctly predicted as more or less likely to result in pregnancy by each method, as well as calculate their respective accuracies and compare the improvement offered by Progenesis over the Gardner method.

#### Gardner expansion grade methodology

Image	Expansion Grade	Description
	Grade 1 Early blastocyst	The Blastocoel cavity occupies less than 50% of the embryo's volume.
	Grade 2 Blastocyst	The volume of the blastocoel cavity is equal to or greater than half the volume of the embryo.
	Grade 3 Full Blastocyst	The blastocoel cavity occupies the entire volume of the embryo.
	Grade 4 Expanded Blastocyst	The volume of the blastocoel has surpassed that of the early embryo, and the zona pellucida is undergoing thinning.
	Grade 5 Hatching Blastocyst	The trophoctoderm is exhibiting herniation, protruding through the zona pellucida.
	Grade 6 Hatched Blastocyst	The blastocyst has fully emerged or exited from the zona pellucida.

\*Use the notation "1-1" for blastocysts that reach only an expansion grade of 1, without providing ICM or TE grades

Progenesis' goal is to help our clinics understand the Gardner grading system so that they can enter grades into the Progenesis portal using these criteria. By adopting a single grading method (Gardner and Schoolcraft), the clinical grading across all 20 images remains consistent for the purpose of this study.

#### Gardner ICM Grade Methodology

Image	ICM Grade	Description
	A	Large inner cell mass (ICM), consisting of numerous densely packed cells that are tightly compacted together.
	B	A smaller size ICM with fewer loosely adherent cells that are less compacted.
	C*	Small number of cells present that appear loosely connected, and difficult to differentiate from TE

#### Gardner TE Grade Methodology

Image	ICM Grade	Description
	A	Uniform pattern of numerous small cells combining to create a cohesive epithelium, displaying consistent scalloped edges.
	B	The cells of lower grades are asymmetrical, unevenly distributed, and fewer in numbers.
	C*	Sparse distribution of cells with varying sizes, constructing a loosely connected epithelium.

\*Please score any ICM or TE grades worse than a C as a C

07/31/2023- Our portal has a KPI feature allowing clinics to view outcomes using embryo grade. Have you used this feature? We will implement the universal "Gardner Grading System" for all embryo grades so we can provide each clinic their data compared to the National Average for all clinical partners in the Revela Network. We have provided a reference to this grading system in the portal in the biopsy data screen. Simply click on the circle with the "i" to view the PDF resource and download it for reference. We will also send an email to all clinical users to provide this update.

For more information, please contact our support team or your account manager.

Support@progenesis.com

# AUGUST NEWSLETTER



## PROGENESIS

We help you start a healthy family

### Brazil



June is Infertility Awareness Month. Infertility affects approximately 15% of the population, according to the World Health Organization (WHO). Its causes can be multifactorial and are distributed between men and women.

Progenesis Brasil believes that educational actions in health need to be carried out so that quality information reaches professionals and patients, as this is the only way we can break down barriers and taboos that we still face in our society today.

Our Director of Genetic Counseling, Education and Scientific Advice Dra. Cristina Carvalho participated giving lectures in several events contributing actively in the dissemination of knowledge:

- Fertility Encounter: The Importance of Genetics in the Patient Journey
- Class at the Sapiente Institute: Bases of Human Genetics and the importance in reproductive medicine
- LIGAR Lecture (Universidade Ciências da Saúde Porto Alegre): The importance of genetics and genetic counseling in human reproduction

Progenesis Brazil Laboratory: **It is in the final stages of construction and very soon we will start local operations.**

- Priscila Motta assumes the position of Laboratory Director, also remaining in charge of the Quality Assurance and Compliance areas.
- Improved the "Biopsy Collection and Submission Protocol" for better understanding by the embryology team.
- Prepared the kit request and receipt instructions documents, biological material transport request instructions.

Is your clinic interested in becoming a member clinic in Brazil or Latin Americas? Please contact

**Angelica Mury via email:**  
**[angelica.mury@Progenesis.com](mailto:angelica.mury@Progenesis.com)**

# AUGUST NEWSLETTER



## PROGENESIS

We help you start a healthy family

### India

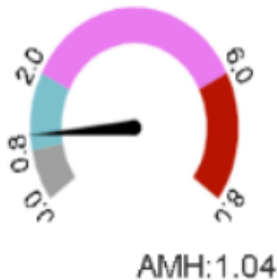
**Office of District Magistrate (South East)**  
**Govt. of NCT of Delhi**  
Old Gargi College Building, Lajpat Nagar - IV, New Delhi  
**Form - B**  
(Refer rules 6(2), 6(5) and 8(2))  
**CERTIFICATE OF REGISTRATION**

Progenesis is immensely proud to announce that our Laboratory in India has received the important licenses. to start laboratory operations. The laboratory is now working on training and internal clinical validation so that we can start accepting samples from clients.

For additional information or to partner with us, please contact **Dr. Rajni Khajuria** via email: [Rajni.Khajuria@Progenesis.com](mailto:Rajni.Khajuria@Progenesis.com)

### Research and Innovation

#### AMH Level



Research and development is an important aspect of medicine, providing means to offer innovative solutions to your patients. Is your clinic interested in joining our studies? Please contact us for more information.

Please contact Sheela Ali, PhD, HCLD/TS/CC(ABB), [Sheela.Ali@Progenesis.com](mailto:Sheela.Ali@Progenesis.com), to request a complimentary visit at your center.

### Progenesis Academy

**Progenesis** is excited to announce our upcoming webinar.

**India**  
**Topic: IVF Success-Understanding Endometrium as a Predictive Factor**

**When:** August 09, 2023, 5pm, IST

**Speaker: Dr. Puneet Rana Arora**  
MBBS,MS(O&G),MRCOG(UK),M.Sc: Reproduction & Development(UK)  
Senior Consultant- Reproductive Medicine & Assisted Reproduction (Infertility, Oncofertility, IVF)  
Founder & Director, CIFAR, Gurgaon, India



Webinars are held monthly on the second Wednesday at 3PM PST.